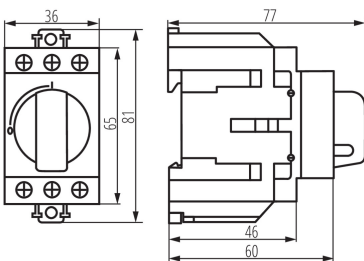


23238 KMI-R-3/40A

Modular switch disconnector

5905339232380



GENERAL DATA:

Utilisation category: AC-22A / AC-23A

Place of application: Indoors

Norm: PN-EN 60947-3

Length [mm]: 77

Width [mm]: 36

Height [mm]: 81

TECHNICAL DATA:

Rated voltage [V]: 415 AC

Rated current [A]: 40

Rated frequency [Hz]: 50

Connection type: Terminal block

Range of sections of wires used [mm²]: 1-16

Control type: mechaniczne

Number of modules: 2

IP class: 20

Rated insulation voltage UI [V]: 800

Rated impulse withstand voltage Uimp [V]: 6000

Rated operational current Ie [A]: 40 (AC-22A) / 40 (AC-23A)

Number of poles: 3

Thermal current Ith [A]: 40

LOGISTIC DATA:

Unit of measurement: unit

Packaging method: 60

Number of units in the secondary packaging: 1

Number of units in the packaging: 60

Net unit weight [g]: 144

Grammage [g]: 170.5

Length of a unit pack [cm]: 4

Width of a unit pack [cm]: 8.6

Height of a unit pack [cm]: 8.6

Weight of a cardboard box [kg]: 10.23

Width of a cardboard box [cm]: 27

Height of a cardboard box [cm]: 19.5

Length of a cardboard box [cm]: 51.5

Volume of a cardboard box [m³]: 0.027115