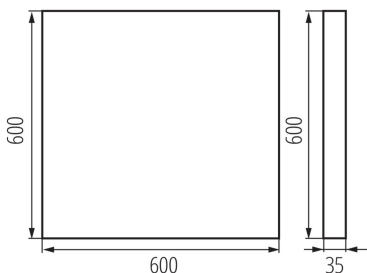
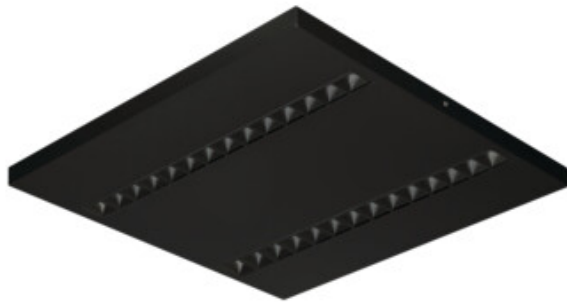


Surface-mounted LED office fixture

5905339359780



GENERAL DATA:

Colour: black

Place of assembly: ceiling mounted

Place of application: Indoors

Minimum distance from the illuminated object : 0,5m

Compatible with a dimmer: no

The product is not suitable to be covered with a heat-insulating material: yes

Length [mm]: 600

Width [mm]: 600

Height [mm]: 35

Integrated LED light source : yes

TECHNICAL DATA:

Rated voltage [V]: 220-240 AC

Rated frequency [Hz]: 50

Maximum power [W]: 39W

Class of protection against electric shock : I

Lampshade material: plastic

Diode type: LED SMD

Luminous flux of the light fitting [lm]: 4800

Colour temperature: Warm white

Correlated colour temperature [K]: 3000

Colour consistency in McAdam ellipses : ≤ 3

Colour rendering index: 80

Service life [h]: 50000

Luminous-flux-retention factor at the end of rated service life :
L90B10

Number of on/off cycles: ≥ 30000

Lighting angle [°]: 80

Ambient temperature range to which the product can be exposed: 5÷25

Shade type: louvre

Enclosure material: Metal

Connection type: Self-clamping block

Range of sections of wires used [mm²]: 1,5÷2,5

Lamp-heating time [s]: ≤ 1

Lamp-ignition time [s]: $\leq 0,5$

Rodzaj soczewki [°]: 80

IP class: 20

UGR: ≤ 16

Surface-mounted LED office fixture



LOGISTIC DATA:

Unit of measurement: unit

Packaging method: 1

Number of units in the secondary packaging: 1

Number of units in the packaging: 1

Net unit weight [g]: 4200

ADDITIONAL INFORMATION:

- 5 years Warranty under the terms of the warranty statement, available on our website

KANLUX S.A. (kat 35978) OS-M8D-WW-RST-B-N1 / Krzywa rozsyłu światła (biegunowo)

Oprawa: KANLUX S.A. (kat 35978) OS-M8D-WW-RST-B-N1
Lampy: 4 x OS-M8D-WW-RST

