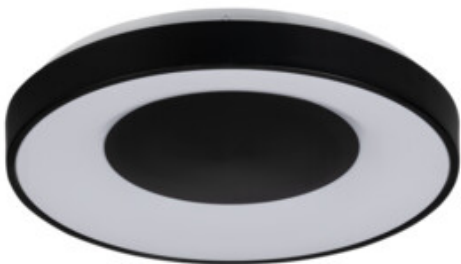


37327 VAND LED 17,5W NW B

Ceiling-mounted LED light fitting

5905339373274



Kanlux VAND LED is a modern version of the traditional ceiling lamp. Black or white elements (depending on the model chosen) add elegance and a breath of freshness. Kanlux VAND LED gives very subtle light, so in larger rooms you can use several of these lamps or place it only in places where you do not need strong lighting.

GENERAL DATA:

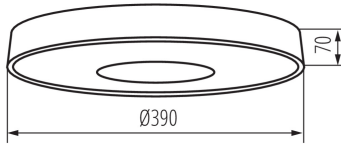
Colour: black
Place of assembly: ceiling mounted
Place of application: Indoors
Minimum distance from the illuminated object: 0,5m
Compatible with a dimmer: no
Height [mm]: 70
Diameter [mm]: 390
Mercury content: no
Integrated LED light source: yes

TECHNICAL DATA:

Rated voltage [V]: 220-240 AC
Rated frequency [Hz]: 50
Maximum power [W]: 17,5
Class of protection against electric shock: I
Lampshade material: plastic
Light source: LED
Diode type: LED SMD
Luminous flux [lm]: 460
Colour temperature: white
Correlated colour temperature [K]: 4000
Colour consistency in McAdam ellipses: 6
Colour rendering index: 80
Service life [h]: 25000
Number of on/off cycles: ≥ 20000
Lighting angle [°]: 120
Luminous efficiency of the lamp [lm/W]: 26
Ambient temperature range to which the product can be exposed: 5÷25
Enclosure material: Metal
Connection type: Bolt terminal block
Range of sections of wires used [mm²]: 1,5
IP class: 20

37327 VAND LED 17,5W NW B

Ceiling-mounted LED light fitting



LOGISTIC DATA:

Unit of measurement: unit

Packaging method: 10

Number of units in the secondary packaging: 1

Number of units in the packaging: 10

Net unit weight [g]: 784

Grammage [g]: 1150

Length of a unit pack [cm]: 42

Width of a unit pack [cm]: 7

Height of a unit pack [cm]: 42

Weight of a cardboard box [kg]: 11.5

Width of a cardboard box [cm]: 38

Height of a cardboard box [cm]: 44

Length of a cardboard box [cm]: 85.5

Volume of a cardboard box [m³]: 0.142956